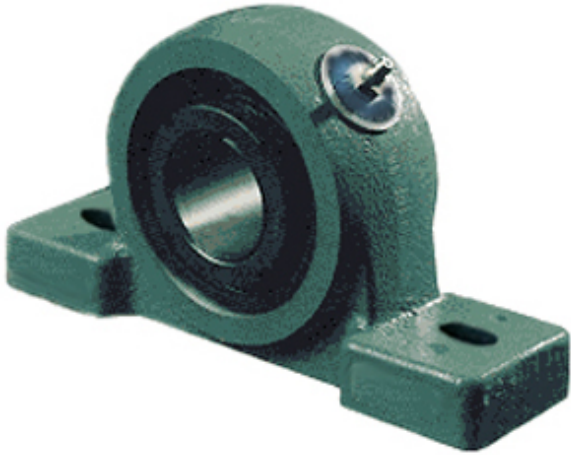




Bearing Driveshaft USA CORP.



3.438 Inch | 87.325 Millimeter x 0 Inch | 0
Millimeter x 4.409 Inch | 112 Millimeter NTN C-
SPW2220-307N1 Pillow Block Bearings

Bearing No. C-SPW2220-307N1

C-SPW2220-307N1 Bearing 2D drawings and 3D CAD
models

Category	Pillow Block Bearings
Inventory	0.0
Manufacturer Name	NTN
Minimum Buy Quantity	N/A
Weight	24.52
EAN	4547359036589
Product Group	M06288
Number of Mounting Holes	2
Mounting Method	Adapter Sleeve
Housing Style	2 Bolt Pillow Block
Rolling Element	Spherical Roller Bearing
Housing Material	Cast Iron
Expansion / Non-expansion	Expansion
Mounting Bolts	24 Millimeter
Relubricatable	Yes
Insert Part Number	MX-W22220BLLKC3
Seals	Double Taconite Service Seal
Housing Configuration	1 Piece Solid
Inch - Metric	Inch
Other Features	Double Row Heavy Duty Phosphate Coated Insert
Long Description	2 Bolt Pillow Block; 3-7/16" Bore; 4.409" Base to Center Height; Adapter Sleeve Mount; Spherical Roller



Bearing Driveshaft USA CORP.

	Bearing; Relubricatable; Cast Iron; Double Taconite Service Seal; Expansion
Category	Pillow Block
UNSPSC	31171511
Harmonized Tariff Code	8483.20.40.80
Noun	Bearing
Keyword String	Pillow Block
Manufacturer URL	http://www.ntnamerica.com
Manufacturer Item Number	C-SPW2220-307N1
Weight / LBS	54
d	3.438 Inch 87.325 Millimeter
Bolt Spacing Minimum	0 Inch 0Millimeter
B	4.409 Inch 112 Millimeter
Actual Bolt Center to Center	12.6 Inch 320Millimeter
D	0 Inch 0 Millimeter
Bolt Spacing Maximum	0 Inch 0Millimeter
Nominal Bolt Center to Center	12.6 Inch 321 Millimeter
bore diameter:	3.4375 in
housing material:	Cast Iron
mounting:	Two-Bolt Base
locking device:	Adapter Mount
bore type:	Round
manufacturer upc number:	4547359036589
base to bore centerline:	4.4090 in